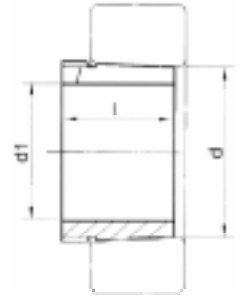




Buchas de Desmontagem

Desmontagem



DESIGNAÇÃO	MEDIDAS (mm)			PORCA PARA DESMONTAGEM	PORCA PARA APERTO	ROLAMENTOS CORRESPONDENTES		
	d	d1	l					
AH 308 AH 2308	40	35	29	KM 9	KM 7	2208 K	22208 HLK	1308 K 21308 K
AH 309 AH 2309	45	40	31	KM 10	KM 8	2309 K	22209 HLK	1309 K 21309 K
AHX 310 AHX 2310	50	45	35	KM 11	KM 9	2210 K	22210 HLK	1310 K 21310 K
AHX 311 AHX 2311	55	50	37	KM 12	KM 10	2211 K	22211 HLK	1311 K 21311 K
AHX 312 AHX 2312	60	55	40	KM 13	KM 11	2212 K	22212 HLK	1312 K 21312 K
AH 313 AH 2313	65	60	42	KM 15	KM 12	2213 K	22213 HLK	1313 K 21313 K
AH 314 AHX 2314	70	65	43	KM 16	KM 13	2214 K	22214 HLK	1314 K 21314 K
AH 315 AHX 2315	75	70	45	KM 17	KM 14	2215 K	22215 HLK	1315 K 21315 K
AH 316 AHX 2316	80	75	48	KM 18	KM 15	2216 K	22216 HLK	1316 K 21316 K
AHX 317 AHX 2317	85	88	52	KM 19	KM 16	2217 K	22217 HLK	1317 K 21317 K
AHX 318 AHX 2318 AHX 3218	90	85	53	KM 20	KM 17	2218 K	22218 HLK	1318 K 21318 K
AHX 319 AHX 2319 AHX 3219	95	90	57	KM 21	KM 18	2219 K	22219 HLK	1319 K 21319 K
AHX 320 AHX 2320 AHX 3120 AHX 3220	100	95	59	KM 22	KM 19	2220 K	22220 HLK	1320 K 21320 K
AHX 322 AHX 2322 AHX 3122 AHX 3222 AH 24122	110	105	63	KM 24	KM 21	2222 K	22222 HLK	1322 K 21322 K
AHX 2324 AHX 3024 AHX 3124 AHX 3224 AH 24024 AH 24124	120	115	105	KM 27	KM 23	2324 K	22224 HLK	1324 K 21324 K
AHX 2326 AHX 3026 AHX 3126 AHX 3226 AH 24026 AH 24126	130	125	115	KM 29	KM 25	2326 K	22226 HLK	1326 K 21326 K
AHX 2328 AHX 3028 AHX 3128 AHX 3228 AH 24028 AH 24128	140	135	125	KM 31	KM 27	2328 K	22228 K	1328 K 21328 K

DESIGNAÇÃO	MEDIDAS (mm)			PORCA PARA DESMONTAGEM	PORCA PARA APERTO	ROLAMENTOS CORRESPONDENTES	
	d	d1	l				
AHX 2330 AHX 3030 AHX 3130 AHX 3230 AH 24030 AH 24130	150	145	135	KM 33	KM 29	2330 K	22230 K
AH 2332 AH 3032 AH 3132 AH 3232 AH 24032 AH 24132	160	150	140	KM 36	KM 30	2332 K	22232 K
AH 2334 AH 3034 AH 3134 AH 3234 AH 24034 AH 24134	170	160	146	KM 38	KM 32	2334 K	22234 K
AH 2236 AH 2336 AH 3036 AH 3136 AH 3236 AH 24036 AH 24136	180	170	105	KM 40	KM 34	2236 K	22336 K
AH 2238 AH 2338 AH 3038 AH 3138 AH 3238 AH 24038 AH 24138	190	180	112	HM 42 T	KM 36	2238 K	22338 K
AH 2240 AH 2340 AH 3040 AH 3140 AH 3240 AH 24040 AH 24140	200	190	118	HM 44 T	KM 38	2240 K	22340 K
AH 2244 AH 2344 AH 3044 AH 3144 AH 24044 AH 24144	220	200	130	HM 48 T	KM 40	2244 K	22344 K
AH 2248 AH 2348 AH 3048 AH 3148 AH 24048 AH 24148	240	220	144	HM 52 T	HM 44 T	2248 K	22348 K
AH 2252 AH 2352 AH 3056 AH 3152 AH 24052 AH 24152	260	240	155	HM 58 T	HM 48 T	2252 K	22352 K
AH 2256 AH 2356	280	260	155	HM 62 T	HM 52 T	2256 K	22356 K



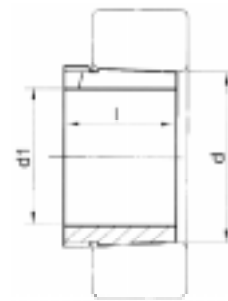
BERTOLOTO & GROTTA LTDA. - Buchas para Rolamentos
 Av. Major José Levy Sobrinho, 1296 • Cx. Postal 92 - CEP 13486-190
 Fone: (19) 3451.8210 • Fax (19) 3451.4770 • LIMEIRA • SP • Brasil
 www.bertolotoegrotta.com.br e-mail: info@bertolotoegrotta.com.br





Buchas de Desmontagem

Desmontagem



DESIGNAÇÃO	MEDIDAS (mm)			PORCA PARA DESMONTAGEM	PORCA PARA APERTO	ROLAMENTOS CORRESPONDENTES	
	d	d1	l				
AH 3056	280	260	131	HML 60 T	HM 52 T	23056 K	
AH 3156	280	260	175	HM 62 T	HM 52 T	23156 K	
AH 24056	280	260	162	HM 58 T	HM 52 T	24056 K 30	
AH 24156	280	260	202	HM 60 T	HM 52 T	24156 K 30	
AH 2260	300	280	170	HM 66 T	HM 56 T	22260 K	
AH 3060	300	280	145	HML 64 T	HM 56 T	23060 K	
AH 3160	300	280	192	HM 66 T	HM 56 T	23160 K	
AH 3260	300	280	228	HM 66 T	HM 56 T	23260 K	22360 K
AH 24060	300	280	184	HM 62 T	HM 56 T	24060 K 30	
AH 24160	300	280	224	HM 64 T	HM 56 T	24160 K 30	
AH 2264	320	300	180	HM 70 T	HM 3160	22264 K	
AH 3064	320	300	149	HML 69 T	HM 3060	23064 K	
AH 3164	320	300	209	HM 70 T	HM 3160	23164 K	
AH 3264	320	300	246	HM 70 T	HM 3160	23264 K	22364 K
AH 24064	320	300	184	HM 66 T	HM 3160	24064 K 30	
AH 24164	320	300	242	HM 68 T	HM 3160	24164 K 30	
AH 3068	340	320	162	HML 73 T	HM 3064	23068 K	
AH 3168	340	320	225	HM 74 T	HM 3164	23168 K	
AH 3268	340	320	364	HM 74 T	HM 3164	22368 K	
AH 24068	340	320	206	HM 72 T	HM 3164	24068 K 30	
AH 24168	340	320	269	HM 72 T	HM 3164	24168 K 30	
AH 3072	360	340	167	HML 77 T	HM 3068	23072 K	
AH 3172	360	340	229	HM 80 T	HM 3168	23172 K	
AH 3272	360	340	274	HM 80 T	HM 3168	22372 K	
AH 24072	360	340	206	HM 76 T	HM 3168	24072 K 30	
AH 24172	360	340	269	HM 76 T	HM 3168	24172 K 30	
AH 3076	380	360	170	HML 82 T	HM 3072	23076 K	
AH 3176	380	360	232	HM 84 T	HM 3172	23176 K	
AH 3276	380	360	284	HM 84 T	HM 3176	22376 K	
AH 24076	380	360	280	HM 80 T	HM 3172	24076 K 30	
AH 24176	380	360	271	HM 80 T	HM 3172	24176 K 30	
AH 3080	400	380	183	HML 86 T	HM 3076	23080 K	
AH 3180	400	380	240	HM 88 T	HM 3176	23188 K	
AH 3280	400	380	312	HM 88 T	HM 3176	22380 K	
AH 24080	400	380	228	HM 84 T	HM 3176	24080 K 30	
AH 24180	400	380	278	HM 84 T	HM 3176	24180 K 30	
AH 3084	420	400	186	HML 90 T	HM 3080	23084 K	
AH 3184	420	400	266	HM 92 T	HM 3180	23184 K	
AH 24084	420	400	230	HM 88 T	HM 3180	24088 K 30	
AH 24184	420	400	310	HM 88 T	HM 3180	24184 K 30	
AHX 3088	440	420	194	HML 94 T	HM 3084	23088 K	
AHX 3188	440	420	270	HM 96 T	HM 3184	23188 K	
AH 24088	440	420	242	HM 92 T	HM 3184	24088 K 30	
AH 24188	440	420	310	HM 92 T	HM 3184	24188 K 30	
AHX 3092	460	440	202	HML 98 T	HM 3088	23092 K	
AHX 3192	460	440	285	HM 102 T	HM 3188	23192 K	
AH 24092	460	440	450	HM 96 T	HM 3188	24092 K 30	
AH 24192	460	440	332	HM 96 T	HM 3188	24192 K 30	
AHX 3096	480	460	205	HML 104 T	HM 3092	23096 K	
AHX 3196	480	460	295	HM 106 T	HM 3192	23192 K	
AH 24096	480	460	250	HMLL100 T	HM 3192	24096 K 30	
AH 24196	480	460	343	HMLL100 T	HM 3192	24196 K 30	
AHX 30/500	500	480	209	HML 108 T	HM 3096	230/500 K	
AHX 31/500	500	480	313	HM 110 T	HM 3196	231/500 K	
AH 240/500	500	480	253	HMLL104 T	HM 3196	240/500 K 30	
AH 241/500	500	480	362	HMLL106 T	HM 3196	241/500 K 30	



BERTOLOTO & GROTTA LTDA. - Buchas para Rolamentos
 Av. Major José Levy Sobrinho, 1296 • Cx. Postal 92 - CEP 13486-190
 Fone: (19) 3451.8210 • Fax (19) 3451.4770 • LIMEIRA • SP • Brasil
www.bertolotoegrotta.com.br e-mail: info@bertolotoegrotta.com.br

